



DAMAC
ISLANDS 2



PARADISE
IS NOT A PLACE,
IT'S WHERE YOU
LIVE THE

*Island
State of
Mind*



WHERE LIFE MOVES WITH EASE,



AND EVERY DAY FEELS LIKE A GENTLE ESCAPE.



PARADISE HAS A SEQUEL

WELCOME TO

DAMAC

ISLANDS²

WHERE THE SPIRIT OF EIGHT NEW ISLAND ESCAPES ARE WOVEN INTO

One Paradise



Bahamas



Tahiti



Bermuda



Barbados



Cuba



Maui



Mauritius



Antigua

N O O D S - I S L A N D S C O M M A D

A LIFE DESIGNED
WITH INTENTION, EMOTION,
AND NATURE AT ITS
Heart

Here, homes breathe with the trees,
paths curve with the wind, and every corner
is shaped by the wisdom of the wild.



D
A
M
A
C
I
S
L
A
N
D
S
2

WHERE THE
Legacy
OF DAMAC ISLANDS
CONTINUES

After the sell-out success of DAMAC Islands, the vision advances with DAMAC Islands 2 - an elevated island-inspired lifestyle. Reimagined as a seamless continuation of the master community, it introduces new spaces and experiences shaped by tropical living.



DAMAC
ISLANDS²

DAMAC
ISLANDS

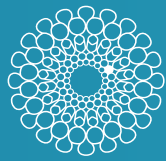
Close to Everything

FAR FROM ORDINARY



15 MIN

SPORTS CITY, MOTOR CITY,
DAMAC HILLS



20 MIN

EXPO 2020 VENUE



23 MIN

AL MAKTOUM
INTERNATIONAL AIRPORT



25 MIN

BURJ AREA



40 MIN

DUBAI INTERNATIONAL
AIRPORT



35 MIN

BURJ AL ARAB



25 MIN

DUBAI INVESTMENT PARK





AN INVESTOR'S *Paradise*

DAMAC Islands made history - and now, the next chapter promises to be even bigger, bolder, and more rewarding.

PROVEN RETURNS, ELEVATED LIVING

Where smart investment meets inspired living, DAMAC Islands is a community that has proven to reward both your portfolio and your way of life.

A LAUNCH BEYOND EXPECTATIONS

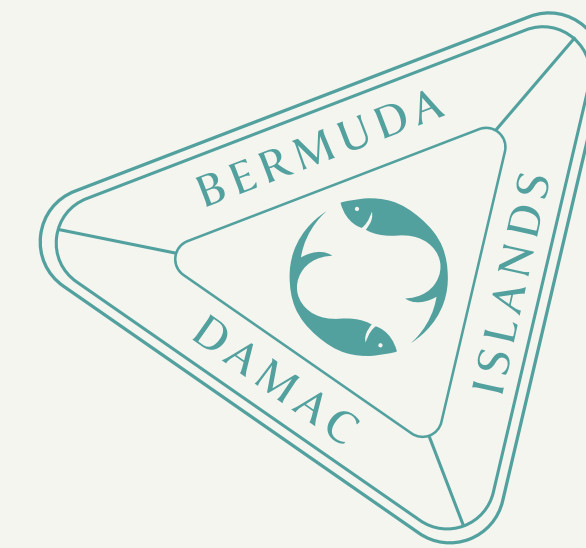
DAMAC Islands was a iconic debut that sold out, proof that true paradise needs no introduction.

ENDURING APPEAL, EXCEPTIONAL YIELDS

DAMAC waterfront communities deliver the perfect blend of luxury and strong investment appreciation, backed by some of the best rental returns in the market.



Balance isn't built — *it's felt*



From healing spaces to mindful design, wellness flows through water, light, and silence.

PARADISE ISN'T A PLACE

It's a Way of Living



At DAMAC Islands 2, every moment awakens your senses, calms your spirit, and inspires your soul. Here, luxury is truly about reconnecting - with nature, with yourself, and with your community.

Guided by the five pillars of eco-living - Nature, Wellness, Adventure, Social, and Cultural, life here isn't just sustainable. It's soulful.

YOUR ISLAND LIFE

CURATED TO PERFECTION

WITH 45+ WORLD-CLASS AMENITIES

NATURE-BASED 



ECO LIVING

WELLNESS 



ECO LIVING

ADVENTURE 



ECO LIVING

 SOCIAL

ECO LIVING



 CULTURAL

ECO LIVING





NATURE-BASED ECO LIVING

TRANQUIL LAKE & ECO PARK



Zen Garden



Verdant Waters



Horizon Trail

BOTANIC GARDEN



Butterflies Nest



Bird Watching



Orchard Field

WHISPERING WATERFALL



Hidden Restaurant



Mystic Falls



Opal Yoga

SOLAR LINK PARK



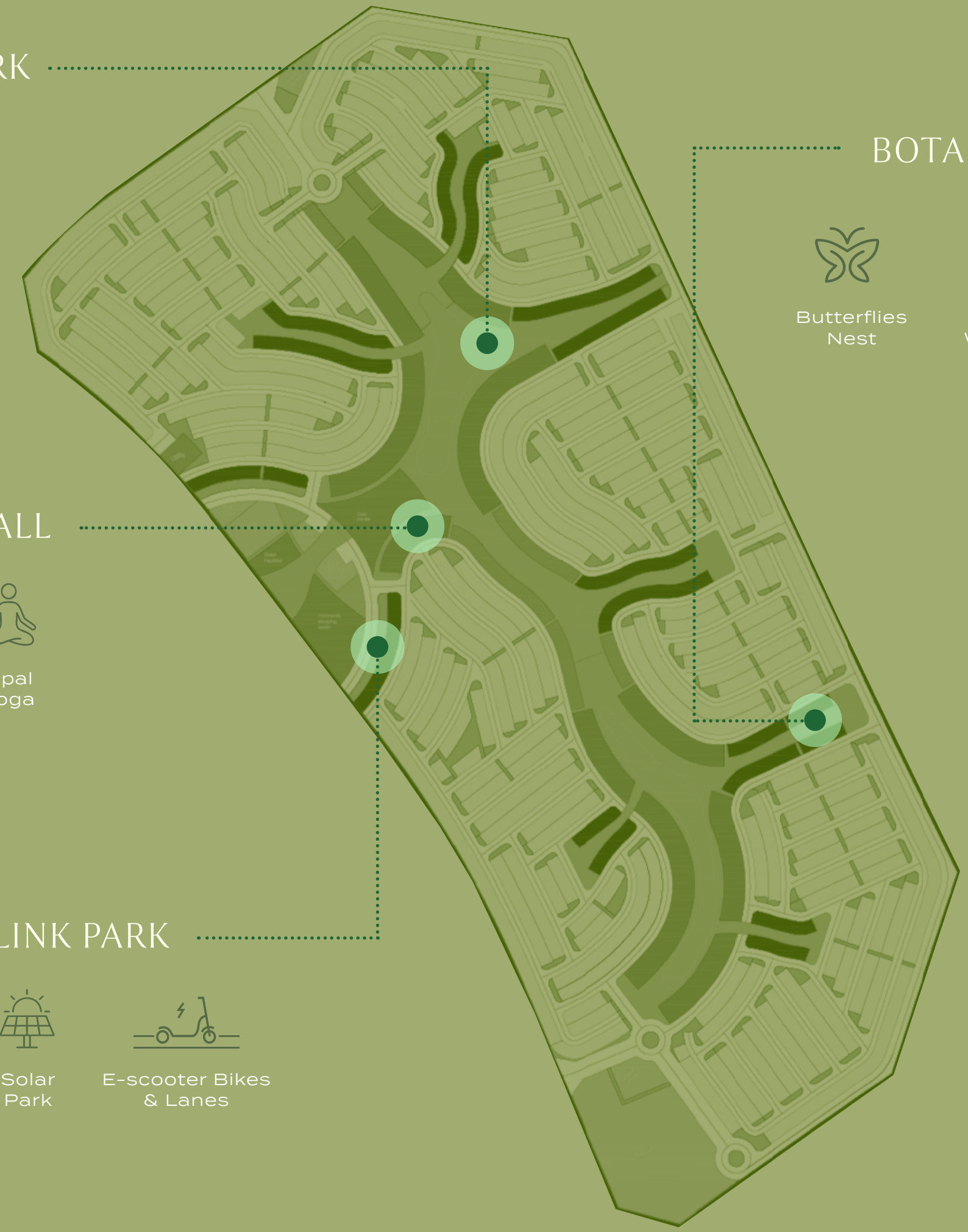
Solar Charging Station



Solar Park



E-scooter Bikes & Lanes



REVITALISE YOUR

Senses



D
A
M
A
C
I
S
L
A
N
D
S
2

Tranquil

LAKE & ECO PARK

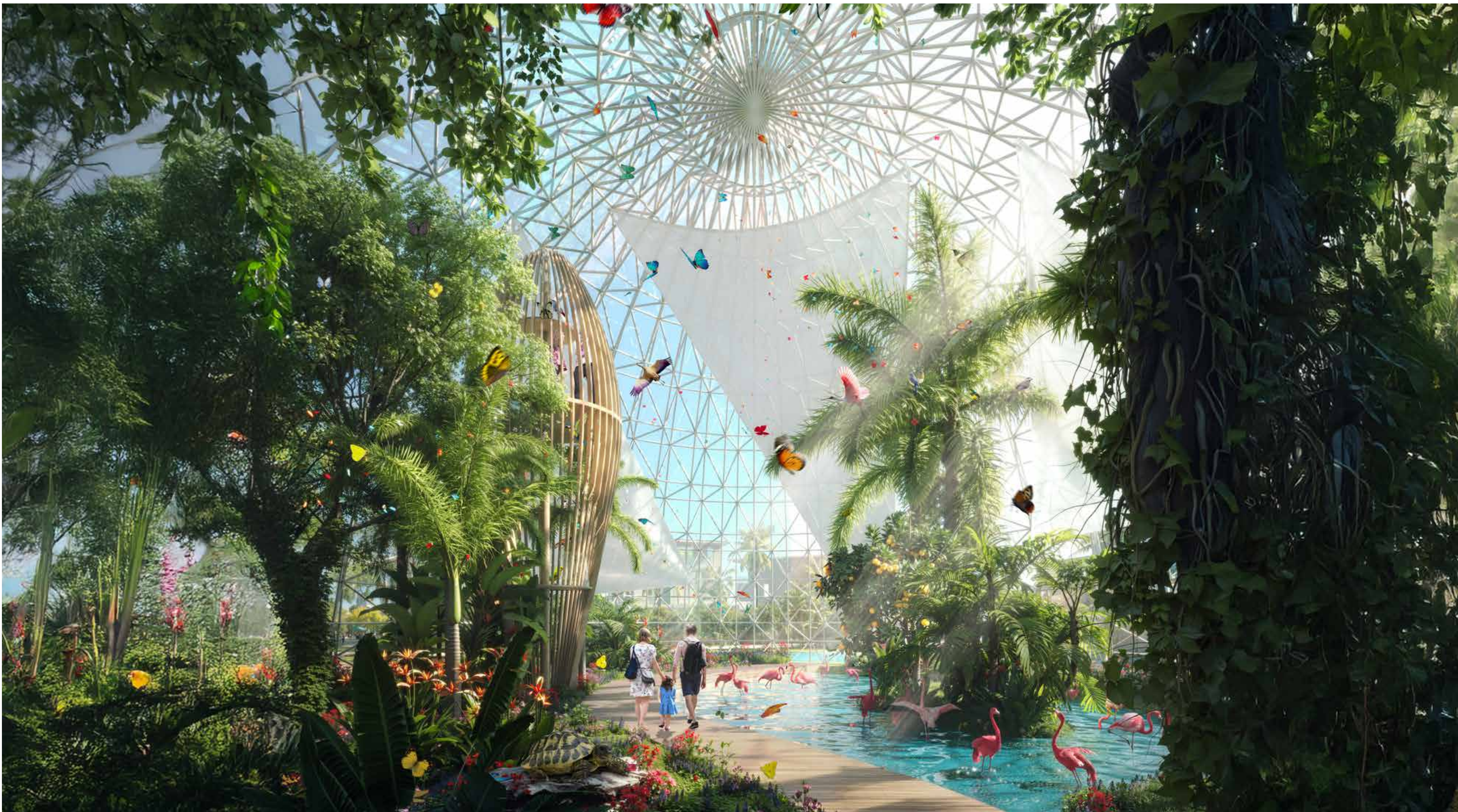
A serene sanctuary with a Zen Garden, Verdant Waters, and the Horizon Trail where every step feels like meditation.

NATURE-BASED



ECO LIVING





D
A
M
A
C
I
S
L
A
N
D
S
2

Botanic

GARDEN

Wander through the Butterflies Nest, pause for Bird Watching, and breathe in the scent of the Orchard Field.

NATURE-BASED  ECO LIVING





D
A
M
A
C
I
S
L
A
N
D
S
2

Whispering

WATERFALL

A sensor-controlled cascade leads to a Hidden Restaurant and the peaceful Opal Yoga Deck where water and wellness meet.

NATURE-BASED  ECO LIVING





D
A
M
A
C
I
S
L
A
N
D
S
2

Solar

LINK PARK

A sustainable escape with
Solar Charging Stations, Solar Park,
and E-scooter Lanes - mobility
powered by sunlight.

NATURE-BASED

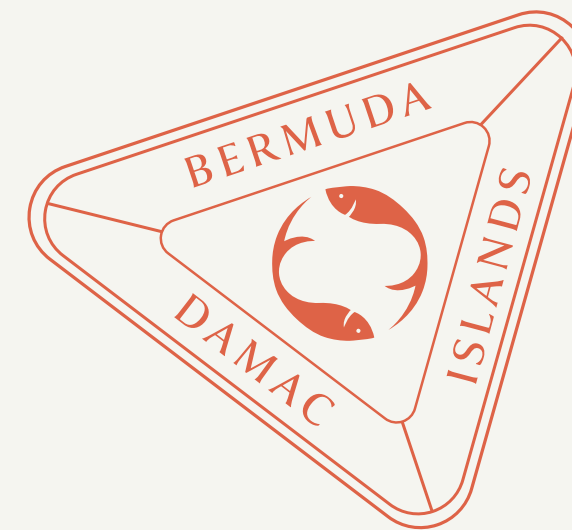


ECO LIVING





Discovery LIVES IN EVERY DETAIL



Whether you're gliding through floating gardens or soaring above treetops, the island invites you to move with wonder.



WELLNESS ECO LIVING

ECO PERFORMANCE GROUNDS



Eco-friendly Gym



Biodynamic Training

ISLAND VIDA WELLNESS



Healing Spa



Healing Herb Garden



Healing Crystals

HYDROTHERAPY



Salt-water Pools



Herbal Tea Bar



Aroma Therapy

FEEL THE *Balance*



D
A
M
A
C
I
S
L
A
N
D
S
2

Island Vida

WELLNESS

A holistic haven with a Healing Spa,
Herb Garden, and Crystals that channel
the energy of the earth.

WELLNESS  ECO LIVING





D
A
M
A
C
I
S
L
A
N
D
S
2

ECO PERFORMANCE *C grounds*

Train in an Eco-Friendly Gym, experience
Biodynamic Workouts, and play on the
Sports Field. Experience fitness in harmony
with nature.

WELLNESS



ECO LIVING





D
A
M
A
C
I
S
L
A
N
D
S
2

Hydrotherapy

ZONE

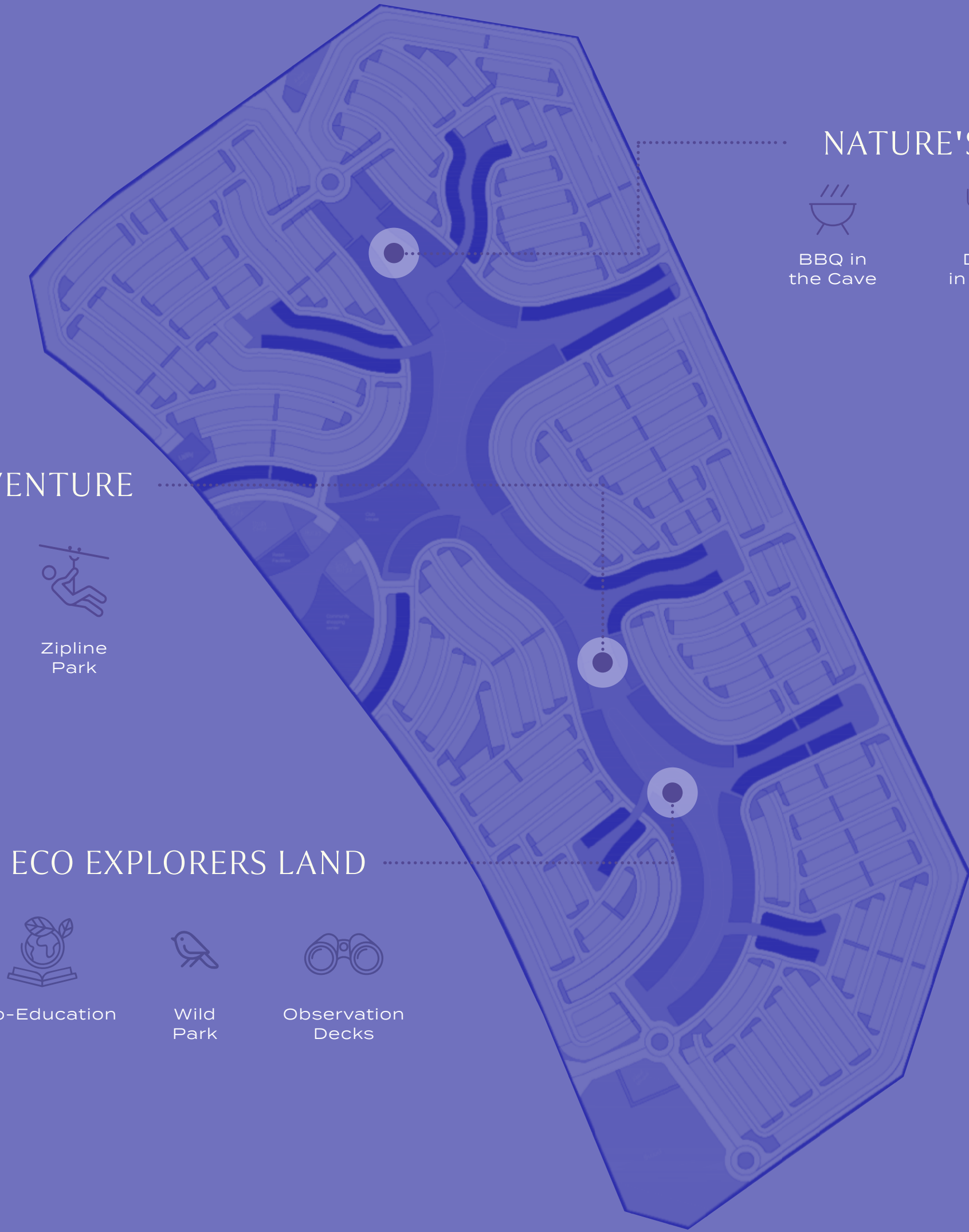
Relax in Saltwater Pools, sip from the Herbal Tea Bar, and rejuvenate with Aromatherapy. Enjoy a spa for the soul.

WELLNESS  ECO LIVING





ADVENTURE ECO LIVING



NATURE'S JOURNEY



BBQ in the Cave



Dining in Nature



Breakfast in the Tent

SKY WOODS ADVENTURE



Treehouse Park



Canopy Walk



Zipline Park

ECO EXPLORERS LAND



Eco-Education



Wild Park



Observation Decks

ACT WITH

Purpose



D
A
M
A
C
I
S
L
A
N
D
S
2

Nature's JOURNEY

Embark on a trail via Wooden Kayaks,
Hanging Bridges, and Floating Gardens.
It's a voyage through living landscapes.

ADVENTURE  ECO LIVING





D
A
M
A
C
I
S
L
A
N
D
S
2

ECO
Explorers
LAND

Learn through Eco-Education, explore the Wild Park, and gaze from Observation Decks. Here curiosity meets conservation.

ADVENTURE  ECO LIVING





D
A
M
A
C
I
S
L
A
N
D
S
2

SKY WOODS *Adventure*

Climb into the Treehouse Park, stroll the Canopy Walk, and soar through the Zipline Park for adventure above the treetops.

ADVENTURE  ECO LIVING



Stories ARE ROOTED HERE



Through art, learning, and local spirit, culture becomes a living part of your everyday - quietly shaping how you see, feel, and belong.



SOCIAL ECO LIVING

THINK & THRIVE

Together

ECO SMART CO-WORKING

- Trading Garden
- Eco Business Pods
- AI Intergrated

ECO LODGE HOSPITALITY

- Organic Pool
- Farm to Table
- Eco Friendly Design

NATURE'S VENTURE

- BBQ in the Cave
- Dining in Nature
- Breakfast in the Tent

ECO HUB INDOOR CLUBHOUSE

- Indoor Leisure
- Relaxation
- Fitness & Wellness Center

ECO HUB OUTDOOR CLUBHOUSE

- Outdoor Recreation
- Outdoor Leisure
- Natural Swimming Lagoon





D
A
M
A
C
I
S
L
A
N
D
S
2

ECO SMART
Co-Working

Work in AI-Integrated Pods, trade in the Garden, and collaborate in a space designed for sustainable innovation.

SOCIAL  ECO LIVING





D
A
M
A
C
I
S
L
A
N
D
S
2

ECO HUB
Clubhouse
OUTDOOR

Enjoy Outdoor Recreation, Leisure Zones,
and a Natural Swimming Lagoon in a space
where community meets calm.

SOCIAL  ECO LIVING





D
A
M
A
C
I
S
L
A
N
D
S
2

ECO HUB
Clubhouse
INDOOR

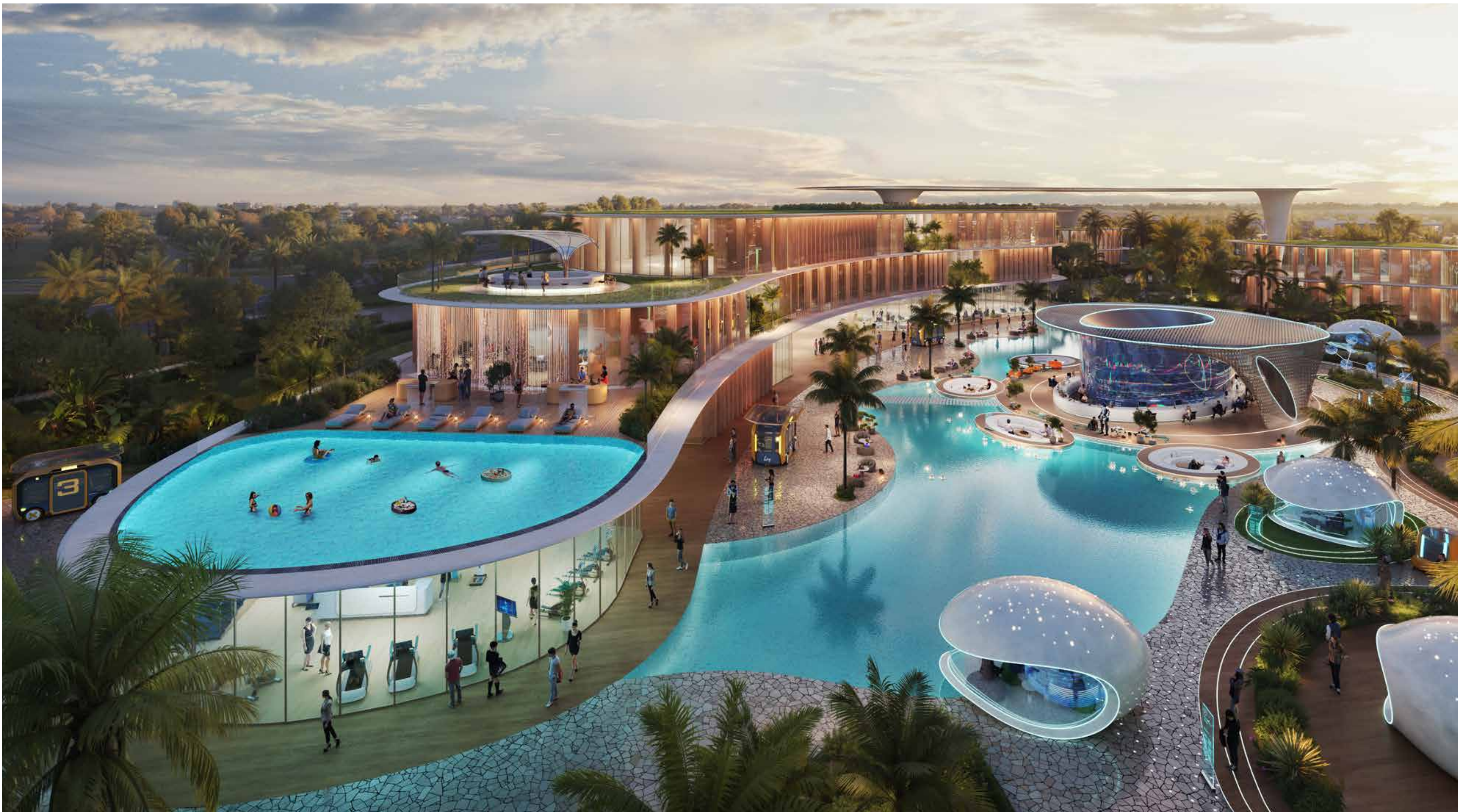
Unwind in Indoor Leisure, recharge
in Relaxation Zones, and energise
at the Fitness & Wellness Centre.

SOCIAL



ECO LIVING





D
A
M
A
C
I
S
L
A
N
D
S
2

ECO LODGE
Hospitality

Stay in eco-designed lodges with Organic Pools, Farm-to-Table Dining, and architecture that breathes with nature.

SOCIAL  ECO LIVING





D
A
M
A
C
I
S
L
A
N
D
S
2

NATURE'S *Venture*

Feast in the wild with BBQ in the Caves,
Breakfast in the Tent, and Dining in Nature
with meals that become memories.

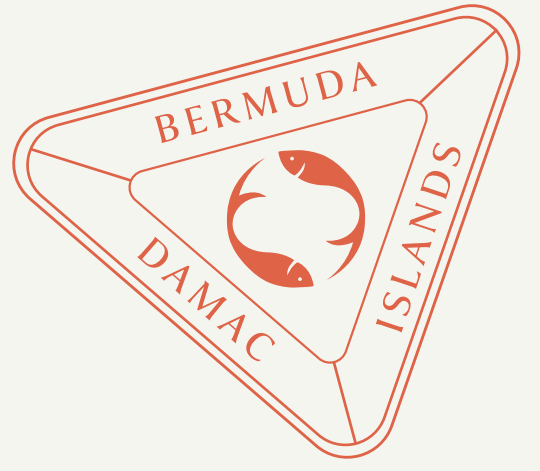
SOCIAL



ECO LIVING



Connection IS THE NEW LUXURY



Experience island vibes, family moments, and shared joy in a community where paradise meets togetherness.








CULTURAL ECO LIVING

LEARN &

Celebrate



THE CULTURAL SQUARE

-  Controlled Climate Dome
-  Performance Stage
-  Food Market

GARDEN OF INSIGHT

-  Museum Library
-  Art & Sculptures
-  Study Garden



D
A
M
A
C
I
S
L
A
N
D
S
2

GARDEN OF
Insight

Explore the Museum Library, admire Art & Sculptures, and reflect in the Study Garden.
Discover a sanctuary for the mind.

CULTURAL



ECO LIVING





D
A
M
A
C
I
S
L
A
N
D
S
2

THE CULTURAL *Square*

Experience the Climate Dome, enjoy performances on the Stage, and savour flavours at the Food Market. Appreciate a touch of culture in every corner.

CULTURAL



ECO LIVING



BUILDING TOMORROW

Responsibly

At DAMAC, sustainability isn't just a feature - it's the foundation of future urban living. As pioneers in master community development, we design with purpose, integrating smart infrastructure, energy-efficient systems, and green spaces that enhance everyday life.

Our commitment is validated by globally recognized LEED certifications, reflecting high environmental standards across our portfolio. From construction to community planning, every detail reduces environmental impact and maximises long-term value.

We don't think of sustainability as a trend - it's our blueprint for progress. It's what drives us to explore smart technologies, renewable energy, and eco-conscious materials for shaping a greener tomorrow.



ENVIRONMENTAL PROTECTION



EMISSIONS & CLIMATE ACTION



SUSTAINABLE CONSTRUCTION & GREEN BUILDING



ESG GOVERNANCE & TRANSPARENCY



DEVELOPMENT OF CENTRALISED ESG DATA



EARTH HOUR ENERGY SAVINGS DOUBLED IN 2024



EMPLOYEE WELL-BEING & INCLUSION



HEALTH & SAFETY



TRAINING & DEVELOPMENT



RECORD COMMUNITY INVESTMENT IN 2024

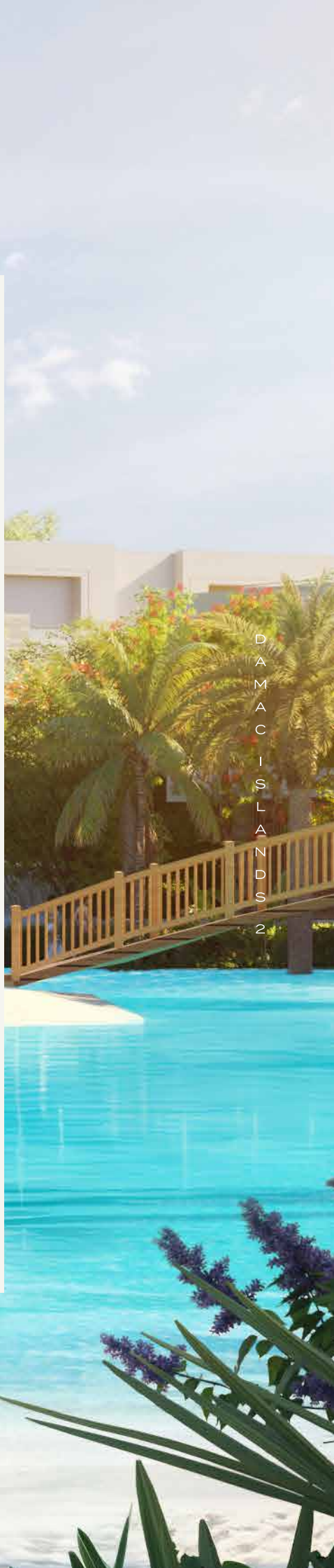




PARADISE IS CALLING



Your Island Home Awaits

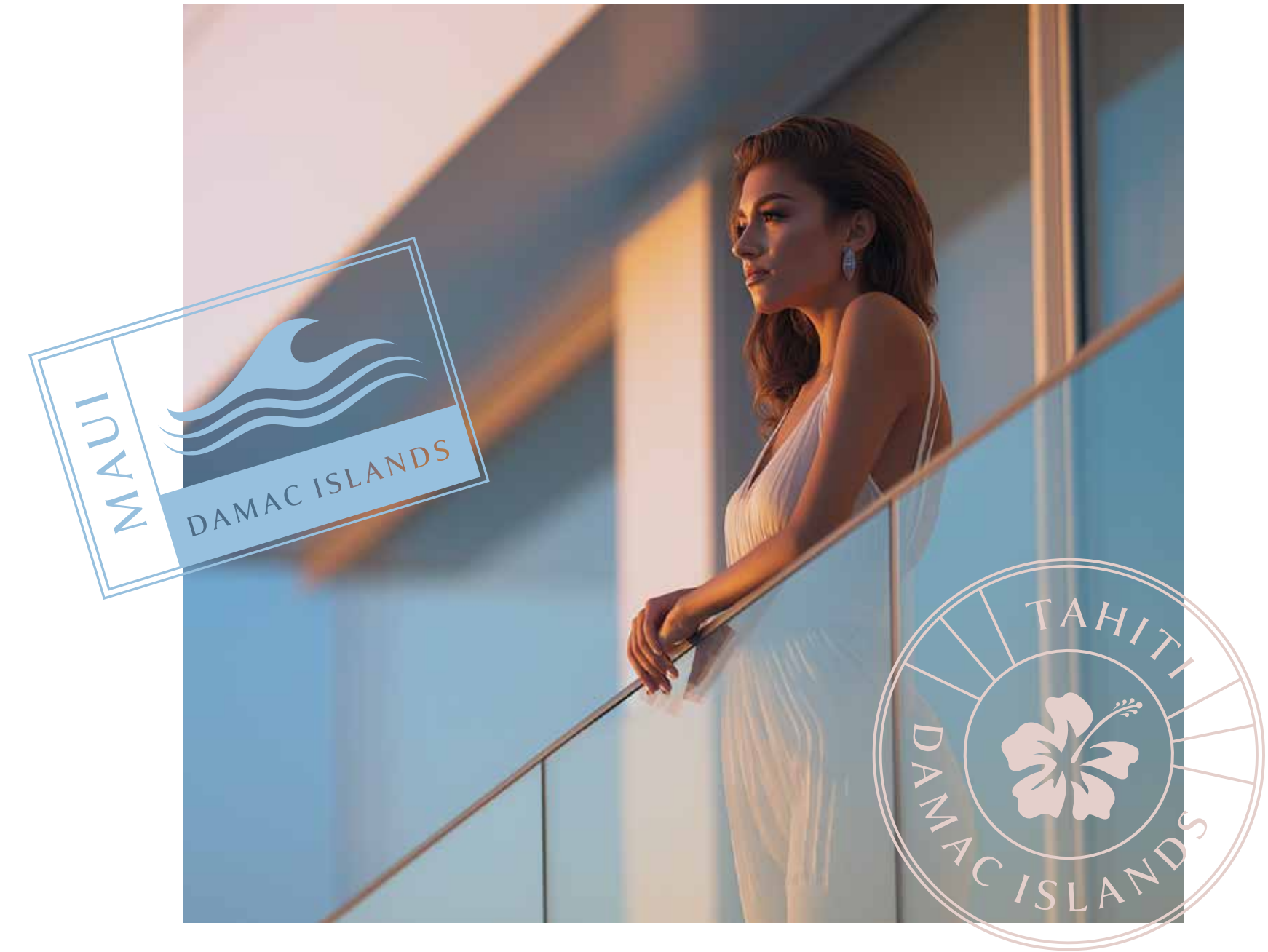


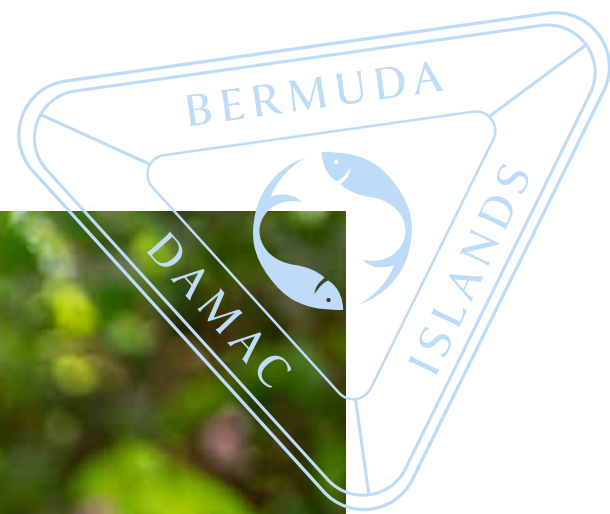
Luxury Villas

THE ULTIMATE ISLAND
Statement

These are not just homes - they're destinations. Set along the water's edge or nestled in lush greenery, our luxury villas offer expansive living, private pools, and panoramic views. From sunrise yoga on your terrace to sunset gatherings by the lagoon, every moment here is curated for indulgence, intimacy, and inspiration.









WHERE DESIGN MEETS THE
Elements

These homes breathe with the island's rhythm. Cross-ventilated layouts invite the breeze, while natural textures and eco-conscious materials echo the land. Designed to feel light, open, and alive, your space becomes a living part of the landscape.











D
A
M
A
C
I
S
L
A
N
D
S
2

MATERIAL
Specification



FAMILY LIVING

1. GENERAL FLOORING: CALACATTA GOLD – PORCELAIN SLAB
2. ACCENT WALL: MARVEL W OROBICO – PORCELAIN SLAB
3. GENERAL METAL: BRUSHED BRASS
4. GENERAL WOOD: WALNUT WOODEN VENEER



Please note that the finishes showcased in this brochure are subject to change and alternative or equivalent materials may be used based on the availability of the actual finishes. The furniture shown in the images is for illustrative purposes only and is therefore not included but rather intended to represent the potential of the space.

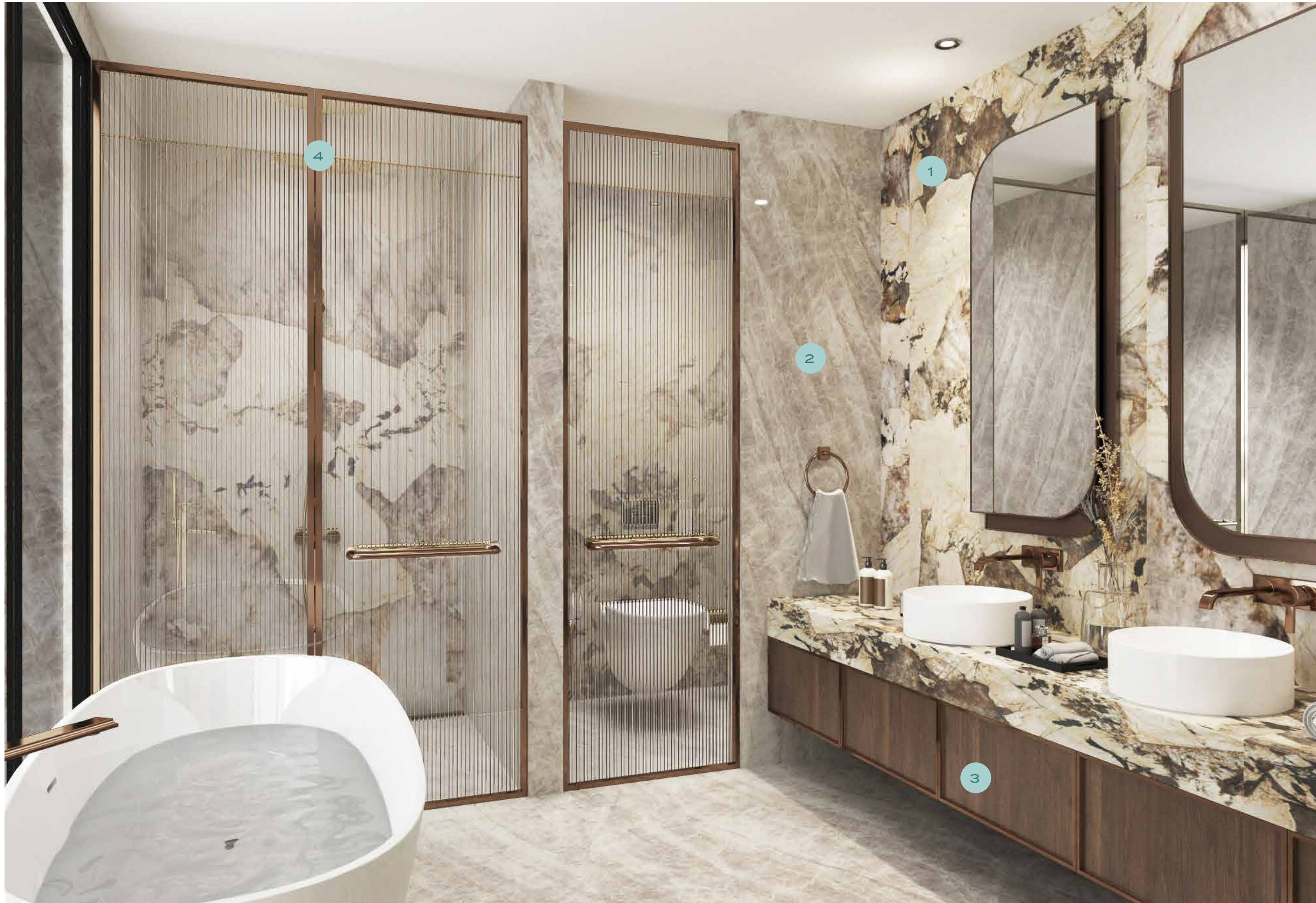


MASTER BEDROOM

1. GENERAL FLOORING: ENTICE ELEGANT PALISSANDRO – WOODEN PORCELAIN TILE
2. DP-103 – GENERAL METAL: BRUSHED BRASS
3. WD-101 – GENERAL WOOD: WALNUT WOODEN VENEER
4. WC-102 – GENERAL WALL COVERING
5. WC-103 – ACCENT WALL COVERING

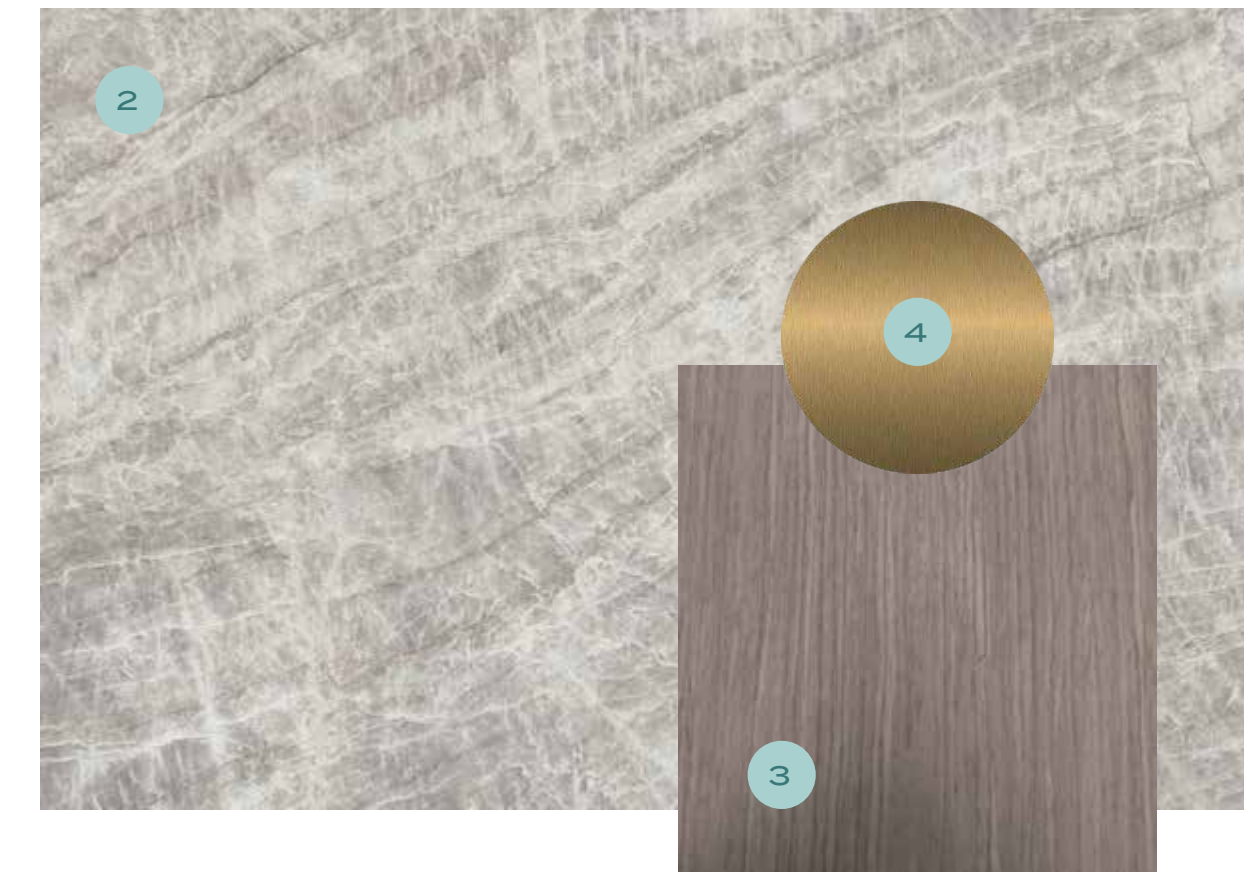


Please note that the finishes showcased in this brochure are subject to change and alternative or equivalent materials may be used based on the availability of the actual finishes. The furniture shown in the images is for illustrative purposes only and is therefore not included but rather intended to represent the potential of the space.



MASTER BATHROOM

- 1. ACCENT WALL: MARVEL GALA DESERT SOUL – PORCELAIN SLAB
- 2. WALLS: MARVEL W TAJ MAHAL – POLISHED PORCELAIN TILE
- 3. GENERAL WOOD: WALNUT WOODEN VENEER
- 4. GENERAL METAL: BRUSHED BRASS

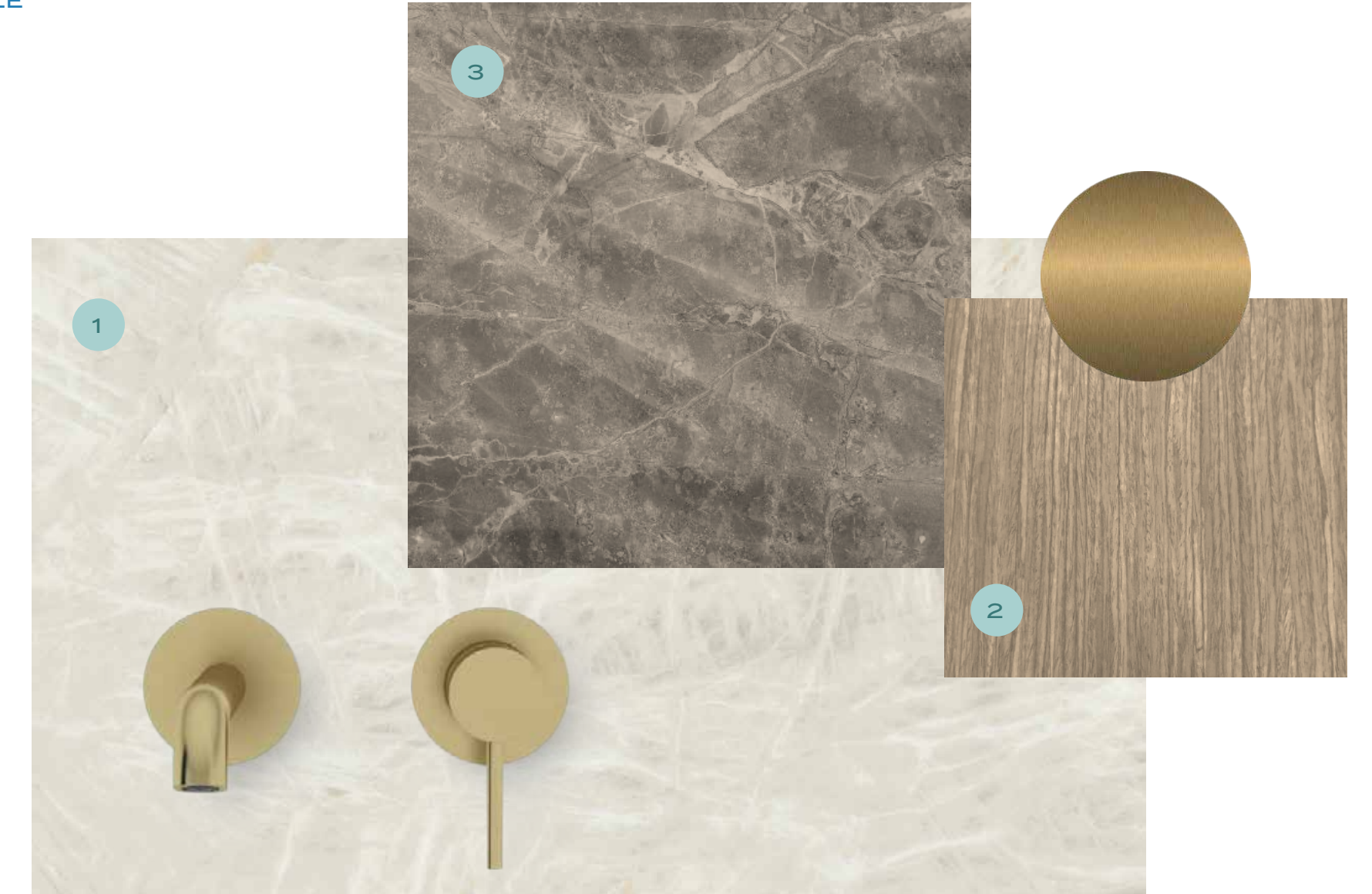


Please note that the finishes showcased in this brochure are subject to change and alternative or equivalent materials may be used based on the availability of the actual finishes. The furniture shown in the images is for illustrative purposes only and is therefore not included but rather intended to represent the potential of the space.



SECONDARY BATHROOM

- 1. WALLS: MARVEL GALA CRYSTAL WHITE – POLISHED PORCELAIN TILE
- 2. WD-101 – GENERAL WOOD: WALNUT WOODEN VENEER
- 3. COUNTERTOP: FIOR DE BOSCO - MARBLE



Please note that the finishes showcased in this brochure are subject to change and alternative or equivalent materials may be used based on the availability of the actual finishes. The furniture shown in the images is for illustrative purposes only and is therefore not included but rather intended to represent the potential of the space.



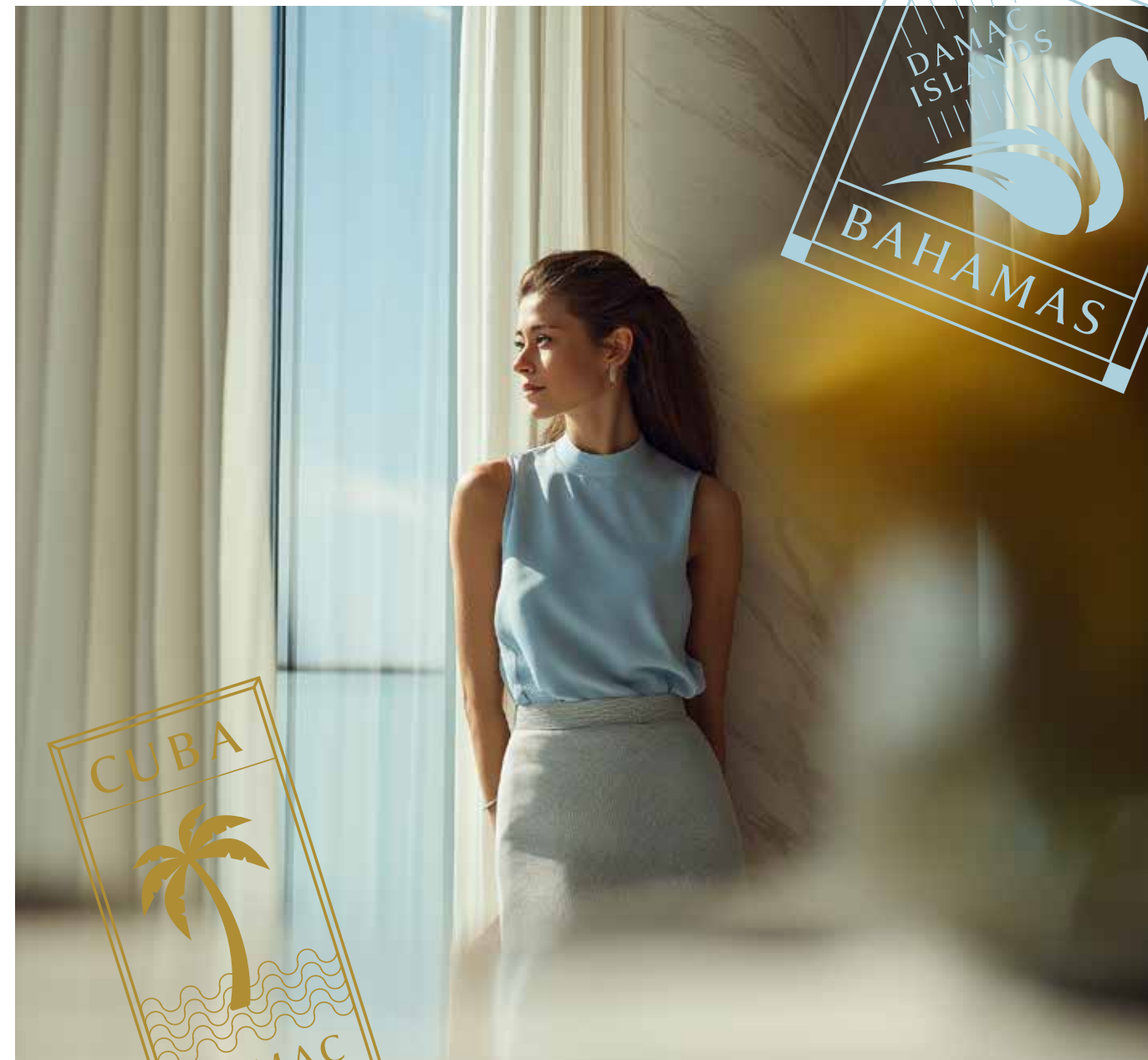
Twin Villas

D
A
M
A
C
I
S
L
A
N
D
S
2

A SHARED ESCAPE INTO
Paradise

Crafted for connected living, our twin villas are ideal for families or friends who value togetherness and independence. Two elegant homes, side by side, each with its own entrance, garden, and soul. Enjoy the intimacy of shared moments and the luxury of personal space - all wrapped in the island's natural embrace.













D
A
M
A
C
I
S
L
A
N
D
S
2

MATERIAL
Specification



MATERIAL AND COLOR VARIATION

1. GENERAL FLOOR
2. BATHROOM ACCENT TILES
3. BEDROOM TILE
4. COUNTERTOP
5. GENERAL WOOD
6. BATHROOM WALL TILES



Please note that the finishes showcased in this brochure are subject to change and alternative or equivalent materials may be used based on the availability of the actual finishes. The furniture shown in the images is for illustrative purposes only and is therefore not included but rather intended to represent the potential of the space.



Townhouses

D
A
M
A
C
I
S
L
A
N
D
S
2

ISLAND LIVING WITH
Urban Energy

For those who crave the rhythm of the city but dream of the calm of the coast, our townhouses offer the best of both worlds. Thoughtfully designed with open-plan layouts, private gardens, and rooftop terraces, each home is a vibrant expression of tropical modernity. Live close to the action, yet always within reach of serenity.







Cluster Map

CLUSTER MAP - BAHAMAS

D
A
M
A
C
I
S
L
A
N
D
S
2

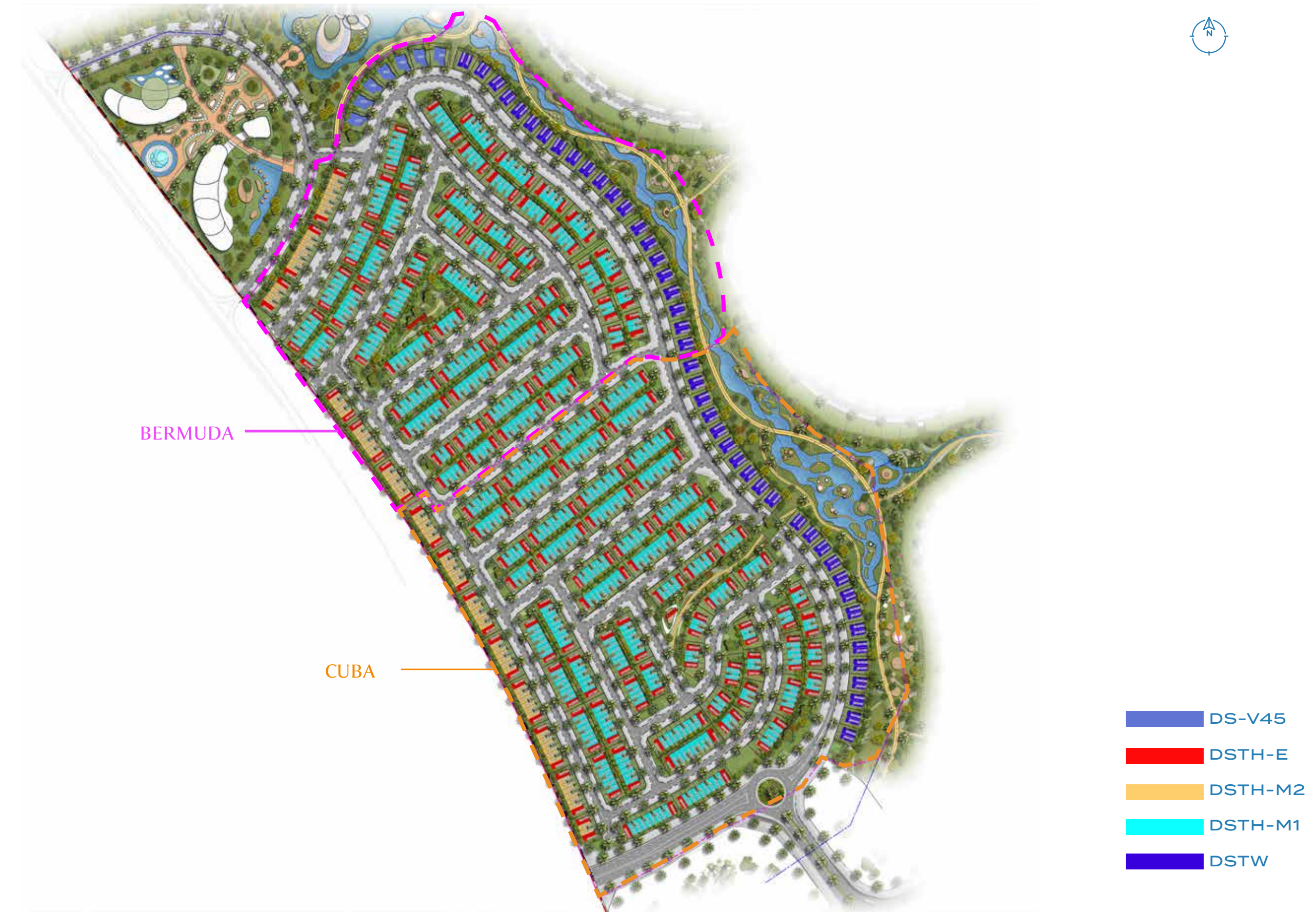


- DS-V45
- DSTH-E
- DSTH-M2
- DSTH-M1
- DSTW





CLUSTER MAP - BERMUDA & CUBA



CLUSTER MAP - TAHITI

D
A
M
A
C
I
S
L
A
N
D
S
2



- DS-V45
- DSTH-E
- DSTH-M2
- DSTH-M1
- DSTW



INDOOR LUXURY MEETS OUTDOOR

Bliss

Floor Plans



LUXURY VILLA

DS-V45 - 6BR + MAID

	SQ.M	SQ.FT
SALEABLE AREA	583.09	6276.33



GROUND FLOOR



FIRST FLOOR



ROOF FLOOR



TWIN VILLA

DSTW - 5BR + MAID

	SQ.M	SQ.FT
SALEABLE AREA	324.44	3492.24



GROUND FLOOR



FIRST FLOOR



ROOF FLOOR



TOWNHOUSE DSTH-E (5 BR-END UNIT) + MAID

	SQ.M	SQ.FT
SALEABLE AREA	293.41	3158.24



GROUND FLOOR



FIRST FLOOR



ROOF FLOOR

TOWNHOUSE

DSTH - MI (4 BR - MID UNIT)

	SQ.M	SQ.FT
SALEABLE AREA	203.04	2185.50



GROUND FLOOR



FIRST FLOOR

TOWNHOUSE

DSTH - M2 (5 BR - MID UNIT) + MAID

	SQ.M	SQ.FT
SALEABLE AREA	262.85	2829.29



GROUND FLOOR



FIRST FLOOR



ROOF FLOOR

DSTH-M2
MID UNIT

DAMAC